



# IQ INTELLIGENT SOFTWARE TOOL Doppler Z-MLE



MLE Area Profile	
Size 352 x 234, 82368	
Wall Loss	
Minimum	0.0000 ( 0% )
Maximum	0.1934 ( 44% )
Mean	0.0307 ( 7% )
Wall Remaining	
Minimum	0.4380 ( 100% )
Maximum	0.2446 ( 56% )
Mean	0.4073 ( 93% )

Doppler Z-MLE is VMI's game-changing, patented tool for pipe wall-loss measurement beyond traditional tangential radiography. Inspectors can now access more comprehensive wall-loss information across the entire radiograph. This provides data to foster optimized decision making and faster fit-for-service calculations.

With Doppler Z-MLE, it is possible to convert an entire radiograph into a wall loss map, with color-coding that allows radiographers to determine accurate wall loss data in real-time. Traditional techniques allow only qualitative assessments, as they provide very limited information in the through-wall region. Doppler Z-MLE is designed with flexibility in mind, such as the ability to easily update and expand the pipe library, even on-site.

With Doppler Z-MLE, our partners can quickly and accurately determine loss of material, remaining life and overall mechanical integrity/asset health in a single exposure.

## Discover What's Inside

3D data from 2D imaging

No need to remove insulation

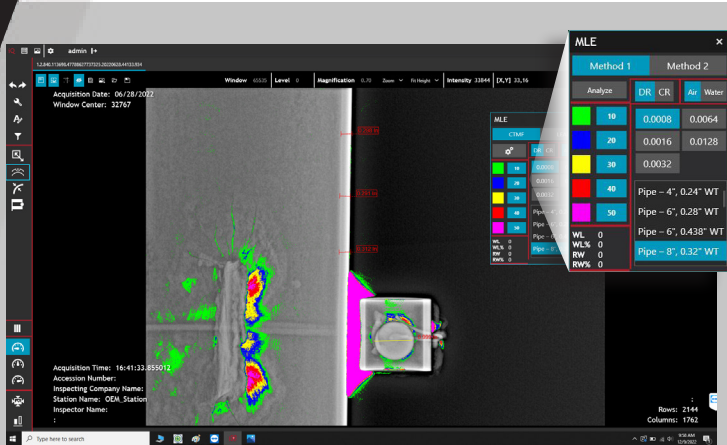
Mechanical integrity insights

Advanced measurement and visualization

INNOVATING SOLUTIONS,  
**TOGETHER.**

850.432.0355 [www.vmindt.com](http://www.vmindt.com)

- 5001 Commerce Park Circle  
Pensacola, FL 32505
- 13805 West Road, Ste 400  
Houston, TX 77041



## A NEW ERA IN RADIOGRAPHIC EXAMINATION

Doppler Z-MLE works based on image contrast and different types of corrosion can be quantified using this tool.

The IQ Intelligent Software has simple tools such as "Area Profile" which provided the statistics of wall loss measurements in an area of concern.

The Doppler Z-MLE tool has demonstrated accuracy of  $\pm 10\%$  wall loss measured.

## METHODS OF MECHANICAL INTEGRITY:

- Corrosion/Pitting
- Erosion
- Weld Root/Erosion
- Localized CUI
- Sulfidation

## About VMI

With innovation and customer service as our priorities, VMI has leveraged decades of experience and the deep knowledge and expertise of our parent company, Varex Imaging, to become the premier provider of imaging solutions.

We understand that the industries we serve require elite expertise, attention to detail and the highest level of integrity. That is why we care, not just about providing the best solutions but about building relationships and ensuring a superior experience for our clients.

**Let's Connect** 850.432.0355 [Clark.Kent@vmindt.com](mailto:Clark.Kent@vmindt.com) [www.vmindt.com](http://www.vmindt.com)